



Saint Johns County ARES

JUNE 6, 2023

Mission of SJC ARES From St. Johns County CEMP

ARES will provide support to ESF-2 with Amateur Radio networks / systems, operators and emergency public communications during emergencies and major disasters. They will also provide communications systems and operators, which will link mass care facilities directly to the EOC.

Information Technology Emergency Support Function 2 (ESF-2)

I. GENERAL

- A. Primary Agency: SJC Management Information Systems
St. Johns County Emergency Management
St. Johns County Radio Communications Division
ARES

- B. Support Agency: Telephone, Cell Phone, Cable Companies
St. Johns County Fire Rescue
St. Johns County Sheriff's Office
St. Augustine Beach Police
St. Augustine Fire Department
St. Augustine Police Department

Mass Care Facilities Includes

- ▶ Hurricane Shelters
- ▶ Flagler Hospital

Hurricane Shelters

General Evacuation Shelters

Bartram Trail High School

Osceola Elementary School

Creekside High School

Otis Mason Elementary School

Cunningham Creek Elementary

Patriot Oaks Academy

Durbin Creek Elementary School

Pedro Menendez High School

Fruit Cove Middle School

Hickory Creek Elementary School

Mill Creek Elementary School

Pet-Friendly Shelters

Timberlin Creek Elementary School

South Woods Elementary School

Special Needs Evacuation Shelters

Freedom Crossing Academy

Pacetti Bay Middle School

Most Frequently Activated



Pedro Menendez High School

Pacetti Bay Middle School/Freedom Crossing Academy

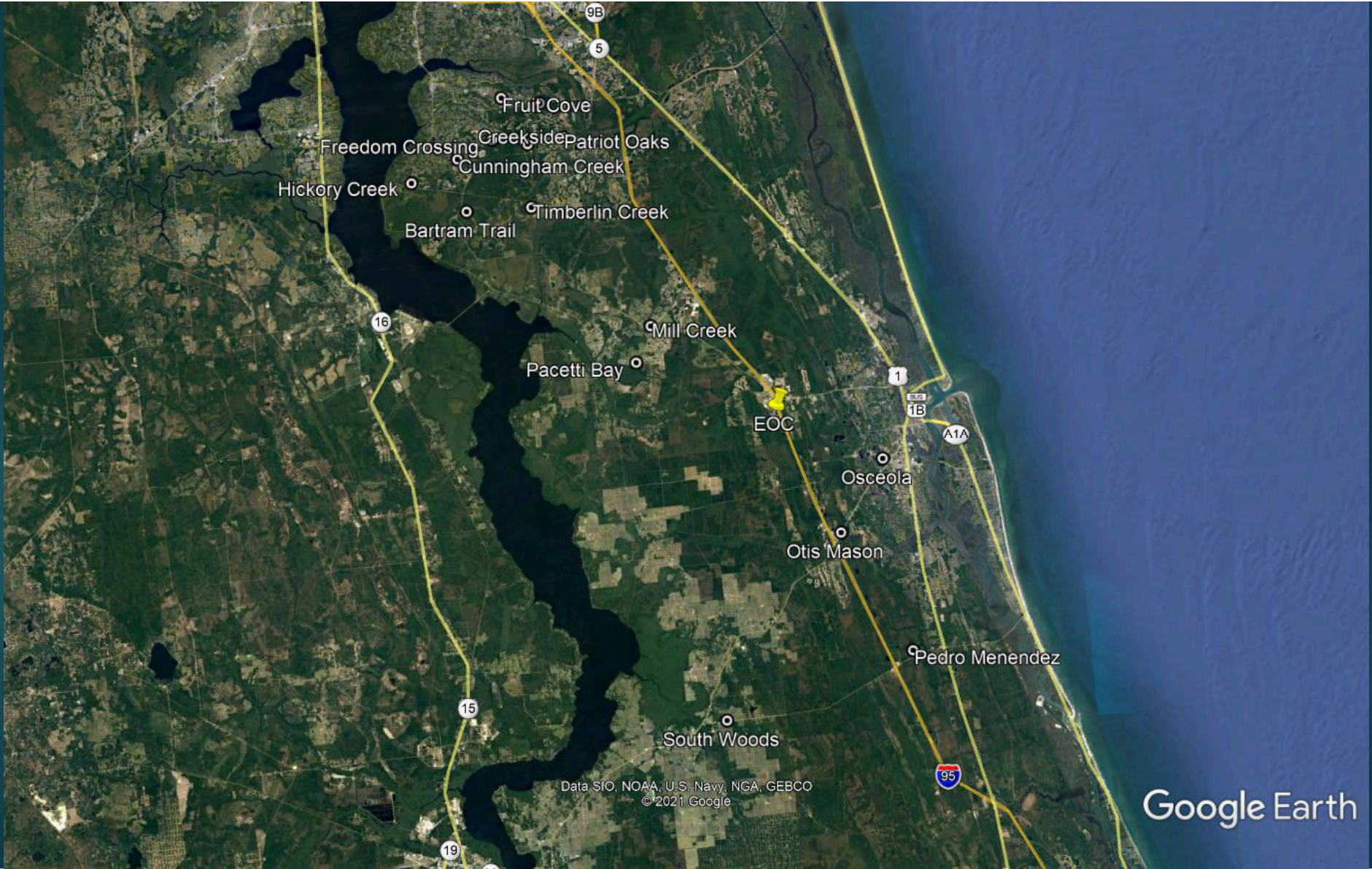
Timberlin Creek Elementary School

South Woods Elementary School

Bartram Trail High School

Osceola Elementary School

Otis Mason Elementary School



Data SIO, NOAA, U.S. Navy, NGA, GEBCO
©2021 Google

Google Earth

History Of ARES Activations

Year	Storm	Shelters Opened	Shelters Staffed	Flagler Hospital?
2011-2015	-	0	0	N
2016	Matthew	8	8	N
2017	Irma	4	4	Y
2019	Dorian	6	4	Y
2022	Ian	3	3	Y

Timelines in Event of Activation

- ▶ EOC Activation – Projected Impact Minus 48 Hours
- ▶ Shelters Open – Projected Impact Minus 24 Hours
- ▶ Operators To Shelters – Projected Impact Minus 6 to 12 Hours
- ▶ Operators Secure From Shelters – Depends On Status of Comm's















Flagler Hospital

- ▶ Operators Must Be Badged By Flagler Hospital
- ▶ Currently Have Two Operators Badged
- ▶ Both Operators Activated To Flagler During Ian At The Request Of The Hospital
- ▶ Twelve Hour Shifts





General Information

For information regarding the role and responsibilities of St. Johns County Amateur Radio Emergency Service (ARES) and information on procedures in emergencies, drills, etc., see the attached document.



**ST. JOHNS COUNTY
AMATEUR RADIO EMERGENCY SERVICE
(SJC ARES)**



In Event Of Activation

Activation of SJC ARES will be initiated by the St. Johns County EC, or a designee of the EC. For the initial activation notification, if internet service is available, the EC will notify, by email, all members of SJC ARES of the activation. Other means of communication, such as telephone, text messaging, etc., may be used. If those means are not available, ARES members should monitor a designated repeater frequency or the designated simplex frequency for notifications.

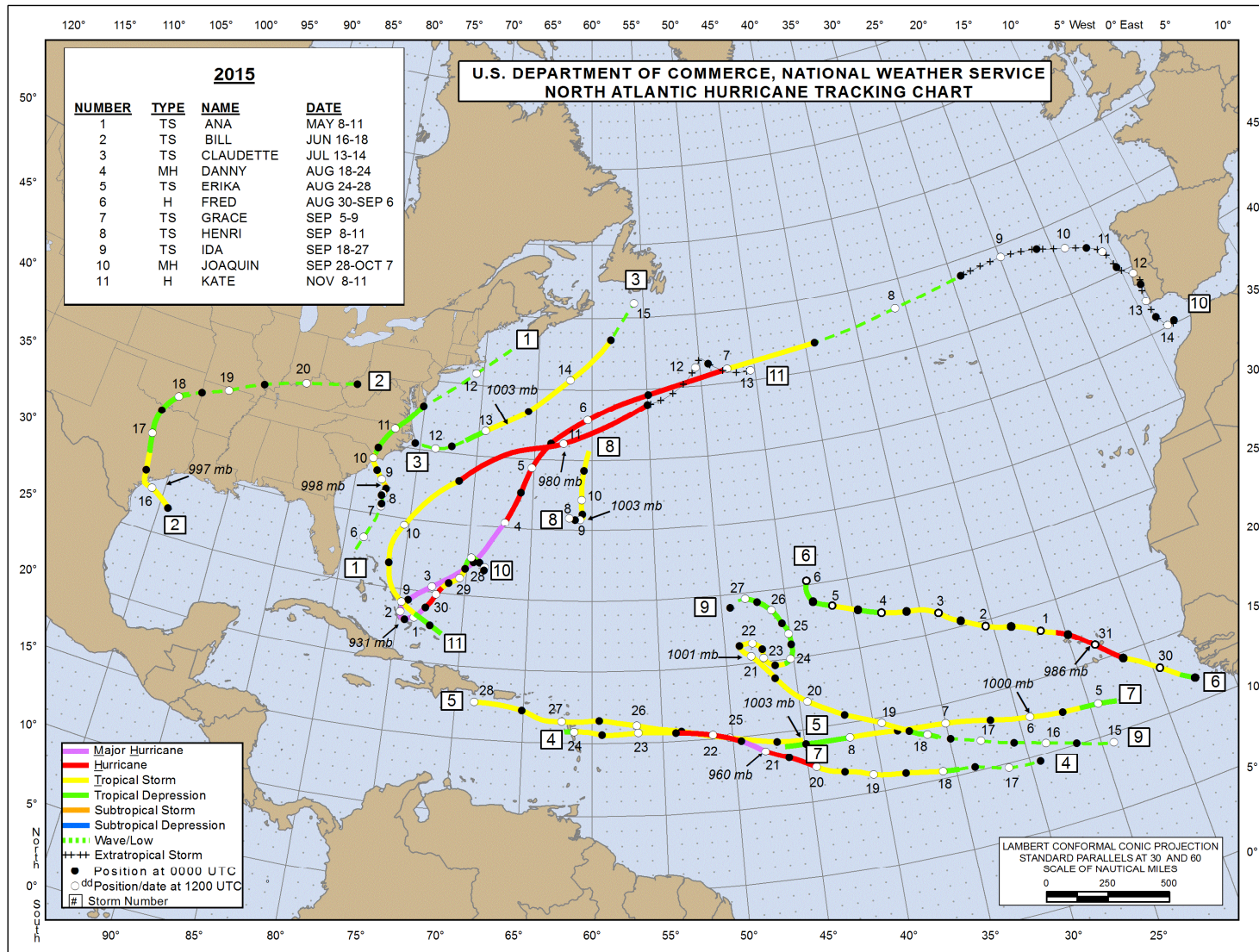
The designated repeater and simplex frequencies will be contained on an ICS-205 form maintained by SJC ARES on the website www.kx4eoc.org.

Modes Of Communication

- ▶ Repeater
- ▶ SARNet
- ▶ Simplex VHF
- ▶ VHF Winlink Peer to Peer
- ▶ HF Winlink
- ▶ Radio Only Winlink

Which Will It Be?

Like 2015??



OR

Like 2020??



